



Beths Grammar School

# Sixth Form Entry Guide 2020



# WELCOME TO BETHS SIXTH FORM

Our Sixth Form provides you with the opportunities to shape the rest of your life. It is here that personal dreams are set firmly in motion. Destinies are planned in Year 12 and realised in Year 13. In our Sixth Form, teenagers become responsible young adults. We are an opportunity for you to become independent and unique.

Offering over 30 A levels allows everyone to shine and flourish. Each subject receives 7 x 50 minutes of teacher time. As an outstanding school we provide excellent teaching and career guidance.

We pride ourselves on taking care of your personal well-being and mental health. We will help you to study hard and become leaders with empathy, compassion, integrity and vision.

We are a place for students who love to learn and want to make themselves, and the wider community, better. Sport, music, theatre, film, art, science and literature; everyone is accommodated.

Beths is a place to make new friends. We are a rich and diverse community who work together to help each other succeed.



**Mr K A O'Brien, Assistant Head/Head of Sixth Form and Mr R J Blyghton, Headteacher**

“There is more to being a Sixth Form student than being allowed to go off site during our non-contact periods and at lunch. We are role models to the rest of the school and prove that, through working together and working hard, we can meet our individual aspirations.

When applying for Sixth Form most students don't realise how much Beths Grammar School offers in terms of subjects choice. With over 30 subjects on offer, we have no doubt that each student will find subjects that intrigue them.

Teaching excellence in Key Stage 5 results in 85% of students going to university at the end of Year 13. In addition, the school supports students in whatever they choose to pursue, with apprenticeship and work experience opportunities made available, for those who wish to apply.

There is also an abundance of sporting teams and performing arts clubs where students can let loose and embrace new skills. Our mixed Sixth Form definitely brings a change to school life from Lower School, with the girls clearly making their mark on Beths.

Amongst the diversity of students in the Sixth Form, there is a shared sense of belonging and achievement. Striving to improve the school and represent it at a moment's notice, our Student Leadership Team, Senior Prefects, House Captains and Prefects are dedicated to voicing student's opinions and organising various events which range from Open Days to fundraising for charity.

In essence, Beths Sixth Form is a community of students and staff which aim to improve the school and welcome new students wherever possible.”



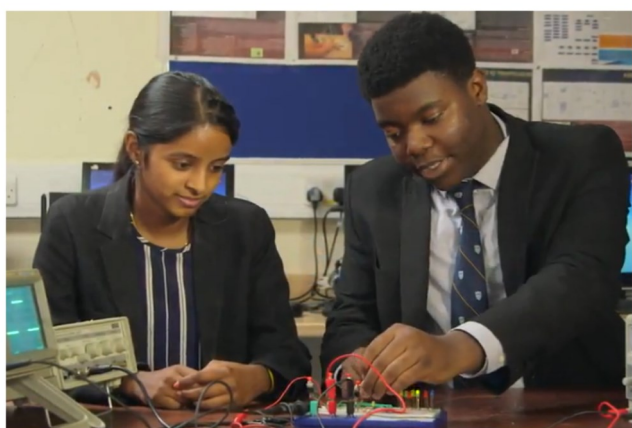
*Elgin Addo—Head Boy*



*Olivia Best—Head Girl*

# WHY BETHS IS BEST

- ◆ We offer over 30 different full A Level courses.
- ◆ All A Level subjects are taught over seven periods per week, each lasting 50 minutes, in a classroom with a specialist subject teacher.
- ◆ We understand the difficulties facing Sixth Form students in balancing their study and personal time. Specialist teachers provide seven periods (almost six hours) of tuition per subject—more than any other local school. This enables our students to pursue leisure activities such as volunteering, sports and part time work opportunities.
- ◆ Independent Study: students are encouraged to study outside of their lessons in our dedicated Sixth Form Study Centre, Learning Resource Centre or outside of the school site. For example, at home or in one the local libraries. We believe that, as our students mature into adulthood and prepare for life at university or beginning their careers, the opportunity to learn how to prioritise and work independently is a valuable quality we encourage at every opportunity.
- ◆ In Year 12 students are supported in securing a week long work experience placement of their choice. This internship opportunity gives our students vital experience in the workplace or field of expertise that they will continue in their studies. This experience is vital when students come to prepare their personal statements in Year 13.
- ◆ A dedicated first aid trained Student Services Team, made up of seven members of staff, is available to students throughout their day. Assistant Heads of Year are based in and around our Sixth Form Study Centre, and are there for any mentoring, well-being or support needs that a student may have.
- ◆ Personal statement, UCAS and Careers support is provided from the start of your journey at Beths, preparing you for your future.



# OUR CURRICULUM

At Beths we offer over 30 different A Level courses. Students will study three A level subjects, each which are two years in duration. For our most able students, there is the option to study four A Levels and, for students embarking on Further Mathematics, you will also be required to study four A Levels.

Each subject is taught for seven periods per week in the classroom with a specialist subject teacher.

To become a Sixth Form student at Beths you will be required to have achieved a minimum of seven full GCSE courses at grades 9-4, which must include English and Mathematics (at grade 5 or above) and an average grade six across your seven best subjects. There are also have individual subject requirements, which you can see in the table below.

<b>Art &amp; Design: Fine Art</b>	Grade 6 in Art
<b>Art &amp; Design: Digital Photography</b>	Grade 6 in Art
<b>Biology</b>	Grade 7 in Biology or a 8/8 in Combined Science
<b>Business Studies</b>	Grade 6 in Mathematics <b>and</b> English
<b>Chemistry</b>	Grade 7 in Chemistry or 8/8 in Combined Sciences
<b>Chinese Mandarin</b>	Grade 6 in Mandarin
<b>Classical Civilisation</b>	Grade 6 in History or English or a humanities subject
<b>Computer Science</b>	Grade 6 in Mathematics
<b>Design Technology</b>	Grade 6 in Design Technology
<b>Drama &amp; Theatre Studies</b>	Grade 6 in English
<b>Economics</b>	Grade 6 in Mathematics <b>and</b> English
<b>Electronics</b>	Grade 7 in Mathematics <b>and</b> 6 in Physics or Combined Science
<b>English Literature</b>	Grade 6 in English Literature
<b>Film Studies</b>	Grade 6 in English or a Humanities Subject
<b>French</b>	Grade 6 in French
<b>German</b>	Grade 6 in German
<b>Geography</b>	Grade 6 in Geography or English or a Humanities Subject
<b>History</b>	Grade 6 in History or English or a Humanities Subject
<b>Law</b>	Grade 6 in English
<b>Mathematics</b>	Grade 7 in Mathematics
<b>Further Mathematics</b>	Grade 8 in Mathematics
<b>Music</b>	Grade 6 in Music or 5 in ABRSM Practical and Theory
<b>Music Technology</b>	Grade 6 in Music or 6 in English
<b>PE</b>	Grade 6 in PE or Biology or Sociology or Psychology
<b>Philosophy</b>	Grade 6 in RE or English or a Humanities Subject
<b>Physics</b>	Grade 7 in Mathematics <b>and</b> 7 in Physics or 8/8 in Combined Science
<b>Politics</b>	Grade 6 in History or English or a Humanities Subject
<b>Psychology</b>	Grade 6 in English or a Science or Psychology
<b>Religious Studies</b>	Grade 6 in RE or English or a Humanities Subject
<b>Sociology</b>	Grade 6 in English or in a Humanities Subject
<b>Spanish</b>	Grade 6 in Spanish

## OVERSUBSCRIPTION CRITERIA

Where there are more applicants from other schools who are predicted to meet the entry requirements than the number of places available, the following criteria will be used to decide which students to offer places to:

- Applicants who are, or have been, looked after children
- Students with siblings attending Beths Grammar School at the time of enrolment
- Proximity to the school measured by reference to the shortest radial distance.

## APPLICATION PROCEDURE

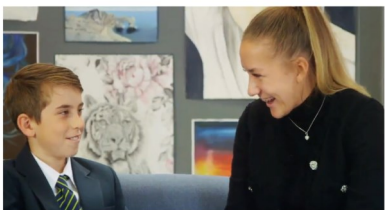
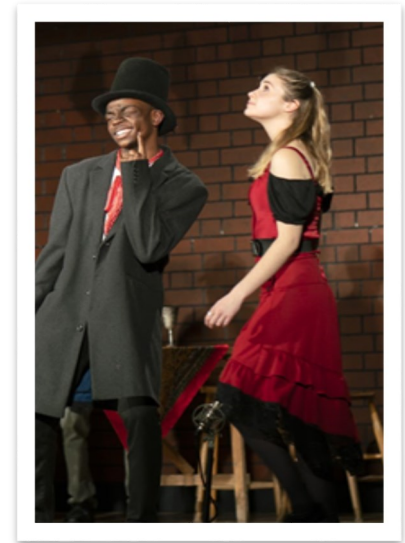
All students interested in joining Beths Grammar School, are invited to complete the online application form which is available on our website from Friday 22 November 2019: [www.beths.bexley.sch.uk/](http://www.beths.bexley.sch.uk/).



# ENRICHMENT OPPORTUNITIES

In addition to A Levels, we provide an excellent Enrichment programme which is called 'LEAP' – **Lead, Enrich, Act, Participate**. This means you will be able to benefit from some of the following:

- Community placements in local primary schools
- Assisting students from Marlborough School
- Subject Mentoring for younger Bets students
- Volunteering as a Road Safety Ambassador
- Volunteering on the Keep Bexley Tidy Scheme
- Completing an Extended Project Qualification
- Completing a MOOC (Massive Open Online Course) with Future Learn or EdX
- Completing a week-long Internship placement in June
- Completing a Duke of Edinburgh award
- Completing a National Citizen Service Award
- Participating in Games and Sports fixtures
- Participating in School Concerts and Drama productions



During Year 12, students can apply for the prestigious positions of Head Boy, Head Girl, Deputy Head Boy, Deputy Head Girl, Senior Prefects, House Captains and Prefects.

Students awarded these posts play a very prominent role in the day to day running of the school.



They help by assisting and supporting staff and students in all manner of ways, from representing the school at public functions like open events and presentation evenings, to acting as excellent role models to not only the wider Sixth Form body, but all the students in the school.

During the course of their tenure, these students become more confident and improve their leadership, presentation and organisation skills.

# ACADEMIC SUPPORT & REPORTING

## ACADEMIC AND PASTORAL SUPPORT

- ◆ Each student will be allocated to a Form Group for the duration of the Sixth Form. Tutors have been specially selected for their expertise in helping students with UCAS applications and writing references. Form Tutors are the first point of contact between school and home.
- ◆ A team of five first aid trained Assistant Heads of Year 12 and 13, whose job it is to provide the academic and pastoral support that every student needs to succeed. As non-teaching members of staff, all of their time is dedicated to providing our Sixth Formers with a conducive and motivating learning environment. By building relationships with students and recognising them as individuals, they are able to act as a link between home and school by providing personalised support according to their needs. Additionally, they offer guidance in choosing either higher education or future careers by working with students to write personal statements, covering and preparing for interviews.
- ◆ Two independent and professional counsellors who you can access at any point during the school week.
- ◆ A dedicated Head of Year.
- ◆ A dedicated Head of Sixth Form.
- ◆ A dedicated Careers Advisor who can offer guidance on apprenticeships and careers.
- ◆ Multiple assessments and reports throughout the year, including trial exams. Helping staff and students to understand if and where support may be required.



## REPORTING AND ASSESSMENT

We feel that providing students and parents with accurate and regular feedback and predicted grades is vital to enable students to achieve their very best. As a result of this, we will provide a report on predicted grades, as well as effort and homework scores, three times per year. One of these reports will contain written feedback from the teaching staff. Additionally, we have at least one parents' evening per year to provide face-to-face support and guidance.

Using the information gained from staff, our team of tutors will provide mentoring for each student. Additionally, our Assistant Heads of Year and the Senior Leadership Team, will meet with selected students who are at risk of not reaching their academic capabilities. Improvement plans will be put in place and these are communicated home. Parents are frequently asked to attend these meetings to ensure that the student is being supported from all sides.

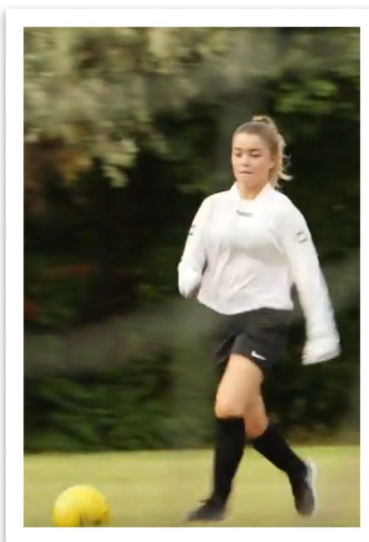
At Beths we believe that, for students to really succeed, they need an accurate and honest assessment of their strengths and weakness as well as guidance on how best to use their time to improve.



# LIFE AFTER BETHS

Whether you choose to go to University, complete a degree apprenticeship or decide you would like to go into the workplace, we offer a wide range of support to help assist students and parents with these important decisions. Some of the support available includes:

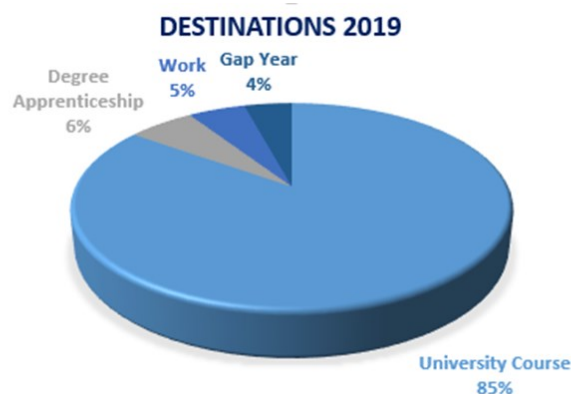
- Specialist support and regular meetings for courses in Medicine, Dentistry and Veterinary Science.
- Regular support sessions for Oxbridge candidates.
- Higher Education evenings for students and parents with valuable information about initial decisions on course choice and university types.
- A follow up Higher Education evening with workshop sessions, for particular subject choices and UCAS application advice.
- Higher Education and Careers Event.
- A day of support from University admissions tutors, helping students with their personal statements.
- Focused group sessions, with invited specialists, such as Engineering, Law and Medicine.
- Advertising and facilitating for university led 'taster days'.
- Dedicated Tutor time, and on-going support throughout the drafting process of personal statements.



---

## DESTINATIONS

The majority of our students leave Beths to attend University. At the end of the last academic year, 85% of our Year 13 students went on to begin their undergraduate studies at universities all around the country. Some students decided that University was not the right next step for them and this choice was fully supported by the school. The graph below shows that a small number of our students chose to move straight into the workplace, in some cases on to a degree apprenticeship.



51% of our students progressed onto either Russell Group or other more selective universities\*. We aim to encourage all of our students to aspire to the best courses and universities for their chosen avenues of studies.

\* Includes the likes of Aberdeen, Aston, Bath, Brunel, Cambridge, City, Durham, Essex, Hull, Goldsmiths, Kent, Kings, Lancaster, Leicester, Loughborough, Nottingham, Oxford, Reading, Royal Holloway, St George's, Surrey, Southampton, Sussex, Swansea, UCL, UEA, York.



**Excellence ● Community ● Nurture ● Respect**



## **Beths Grammar School**

Hartford Road, Bexley, Kent DA5 1NE

Tel: 01322556538

sixthform@beths.bexley.sch.uk

www.beths.bexley.sch.uk

*Beths Grammar School*



*Beths Grammar School*



@Bethsgs



*Beths Grammar*